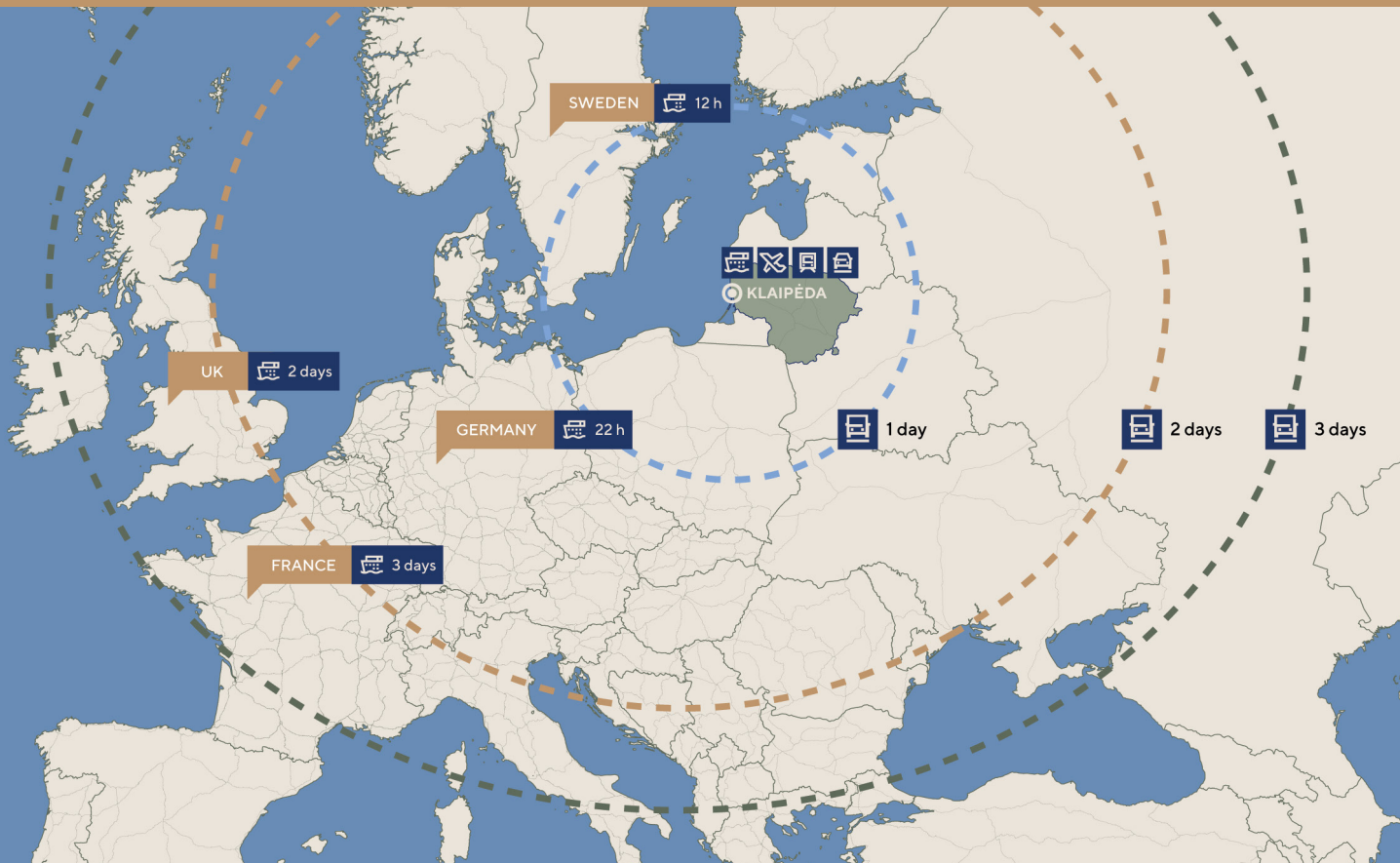




Searching for an **easy entry location** that connects East and West?

Klaipėda is revving up for automotive!

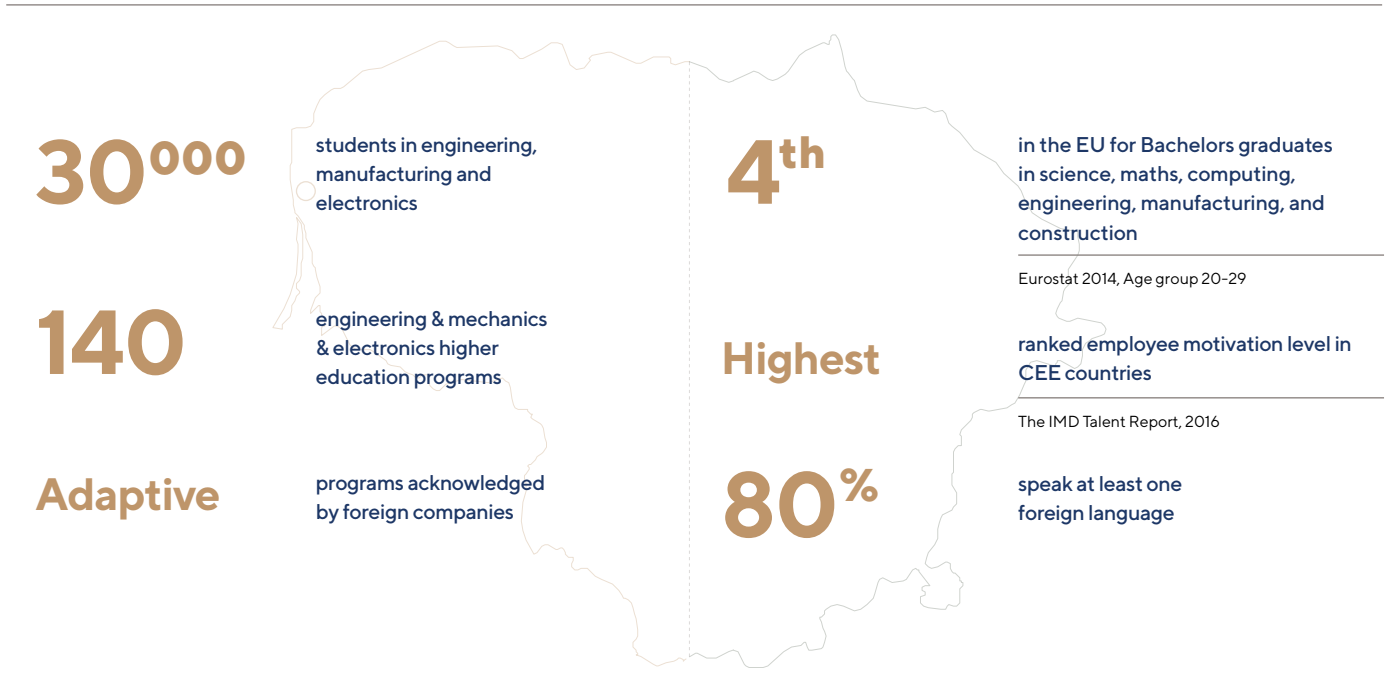


Klaipėda delivers you the **talent** you need to grow

Famous as a city of students - Klaipėda's education programs are renowned for their variety and scope.

Klaipėda catchment area

Lithuania



Yes, Klaipėda really is the best **location** for your automotive

- 1. Easy entry into an unsaturated automotive market**
- 2. Low attrition rate of high quality professionals**
- 3. United city economic development strategy 2030 with focus on advanced manufacturing**

Lithuania is ranked **#1** most attractive location for manufacturers in Europe and **#2** in the world

Manufacturing Risk Index 2018 by Cushman & Wakefield

13% of the Klaipėda region labor pool works in the manufacturing sector, **1%** - in automotive sector

<8% employee attrition rate in the international manufacturing in Lithuania

Biuro, HR agency, 2015

High return on investment: **10%** in Lithuania instead of **7%** elsewhere

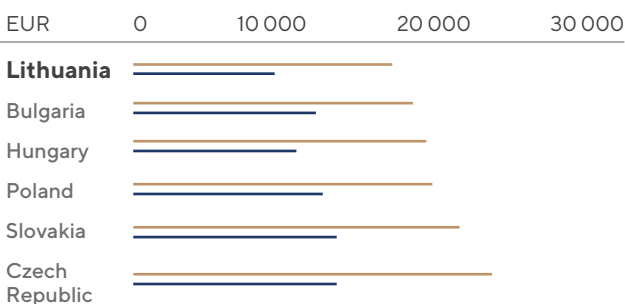
Invest Lithuania

Klaipėda 2030 strategy ranked among the best City FDI promotion strategies

Emerging Europe awards 2017

Support, assistance and aftercare from national and local organisations: Klaipėda ID, Invest Lithuania and Klaipėda FEZ

Average FTE total cost (2018)



— Engineer (TC) — Manufacturing (TC) Source: Invest Lithuania

With its well-developed infrastructure, Klaipėda is not only the gateway to Lithuania, but also a rapidly growing global automotive manufacturing player. Combining traditionally strong engineering competences with flexibility in every step of the investment process, Klaipėda has become a natural choice for global automotive companies.

Virginijus Sinkevičius
Minister of Economy in Lithuania

An ice-free port providing unparalleled links between Scandinavia, the CEE and China. Rail and road connections that lay at the geographical heart of Europe. Looking for a business bridge between East and West? Look no further than Klaipėda.

Klaipėda FEZ

Setting up a business in Klaipėda is quick and straightforward!

Consisting of 412ha of land dedicated to manufacturing plants, logistics, and business park development Klaipėda FEZ is internationally recognized.

— 0% 10 years exemption from corporate income tax

— 0% Real estate tax

1st

and most successful
FEZ in the Baltics

100+

companies

1st

place for Quick
Launch Award

By fDi Markets 2017

16,5%

growth of revenue of Klaipėda
FEZ-based enterprises

2017 FEZ data

Global

Free Economic Zone of the Year

2017 FDI Markets by Financial Times

Flex start

3 months to start your production

“ Our teams of highly skilled engineers, technologists, electronics and automation specialists makes wonders. It's not the first time that a manufacturing model developed by Yazaki's team in Lithuania has been transferred to Yazaki's global operations. ”

Roma Budrienė
Head of Region, YAZAKI

Automotive R&D success case - Dancerbus, a next generation super lightweight fully electric city bus, designed & prototyped in Klaipėda.

These leading automotive companies in Klaipėda

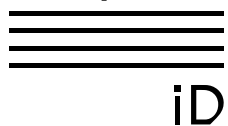


We create engineering traditions in Klaipėda

- + Over 400 companies in the region Producing electrical and electronic, metal and plastic components to automotive industry.
- + Competent in CNC machining, metal processing, complete design & engineering and production & prototyping, test development & more.



Klaipėda



Have questions?
Contact us!

Get all the assistance from:

Klaipėda ID

Klaipėda ID is a non-profit city development agency, its mission is to support both international and local businesses by providing information and on the ground advice.

Kazys Pupinis

Klaipėda ID Head of business

kazys@klaipedaid.lt
+370 6 120 5246
www.klaipedaid.lt
Šaulių str. 32-5,
Klaipėda, Lithuania

Klaipėda FEZ

The first and most successful FEZ in the Baltics.

www.fez.lt

Invest Lithuania

Invest Lithuania is a government agency that provides free investment advice, contacts & data.
www.investlithuania.com